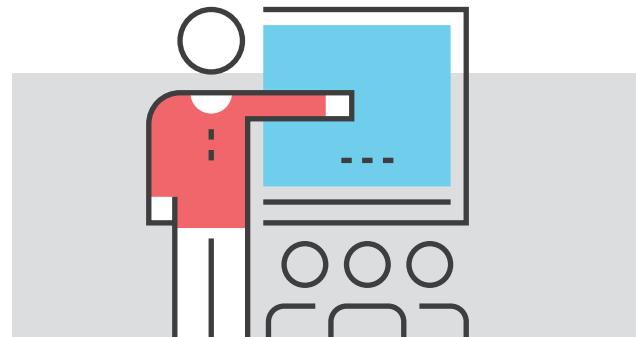
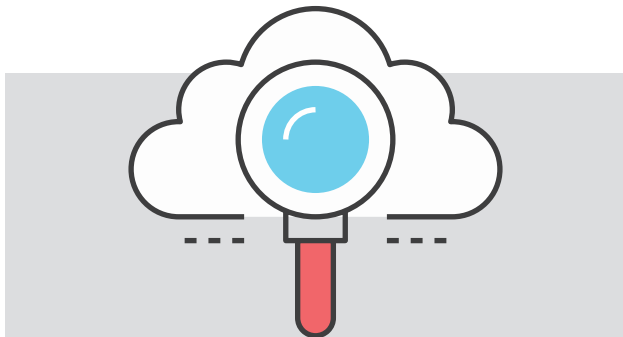


PURPLE-TEAMING SERVICES

Penetration testing is no longer the gold standard for improving your defenses against cyber-attacks. Why? It's only half the picture—identifying vulnerabilities and demonstrating risks through exploitation.



Challenges of Penetration Testing

In traditional penetration testing, testers are considered “red team,” while most defenders are considered “blue team.” However, this method creates some challenges when it comes to protecting your network.

- Teams often operate in a vacuum on a day-to-day basis, sometimes even within their own teams.
- Feedback loops consist of reports being tossed over the wall, if shared at all.
- Emphasis is given on remediation of vulnerabilities rather than prevention and detection growth.

Services—Why Purple-Teaming?

Purple-teaming is a coordinated effort between the two teams, with the common goal of ensuring your company's security controls are working effectively and as expected.

A purple-teaming approach allows you to:

- Create greater synergy and collaboration between the teams—working together to protect your network.
- Test controls in real-time and simulate the type of attack scenario likely to occur if a network is attacked.
- Assess personnel responsible for implementing technical controls.
- Continually improve your detection capacity and response capabilities.



AWARDED AS A TOP TEN CYBERSECURITY PROVIDER

20+ YEARS OF INFORMATION TECHNOLOGY EXPERIENCE

5/8 OF THE LARGEST U.S. FOR-PROFIT HEALTH SYSTEMS ARE OUR CLIENTS

With some of the most recognized and top-ranking IT security professionals in the U.S. as a part of our team, we can help with your purple-teaming or traditional penetration testing needs.