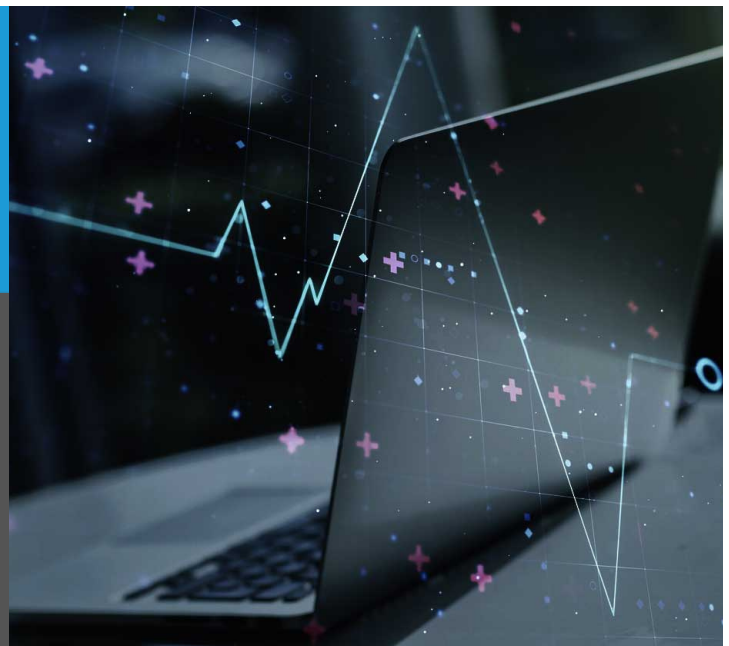


LBMC

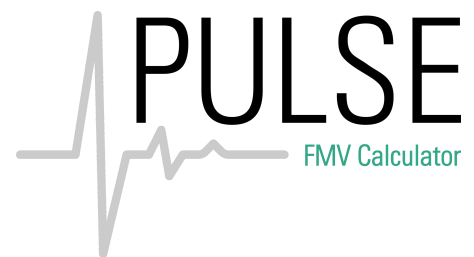
PULSE FMV CALCULATOR

Keeping a pulse on physician
compensation arrangements



LBMC has developed eight online tools to analyze provider compensation arrangements. Our tools accommodate specific geographic and work RVU fee schedule factors. Customized security integrations, mobile apps, onboarding, and training are available.

Our calculator considers a variety of qualitative and quantitative information and can be completed in a matter of minutes. Summary PDF reports include FMV range(s) and a list of assumptions relied upon.



MORE THAN A VALUATION

The development of the tool is driven by the healthcare organizations' need to quickly assess new physician recruitment offers, renewals of existing contracts, and various other compensation arrangements with providers. **Specifically, the purpose of the calculator is:**

IDENTIFY

Identify compensation indications, based on Fair Market Value and commercial reasonableness requirements for the subject specialty.

REPORT

Provide a printable valuation document / opinion which can be utilized for compliance and contract management documentation.

REVIEW

Identify compensation arrangements which may require further review with either a consult with the valuation team or an expanded valuation report.

UNLIMITED USE OF EIGHT TOOLS FOR:

- Physician Employment
(including stacking and one-time payment tools)
- Call Coverage
- Medical Directorship
- Academic
- Shift & Hourly
- Supervision
- Benchmarking
- Offer Letter



Nashville: 615.377.4600
Knoxville: 865.691.9000
Chattanooga: 423.756.6585



Questions?
josh.brummett@lbmc.com



Request a Demo
www.lbmc.com/pulse-fmv/

THE LBMC DIFFERENCE

Wide-Ranging Knowledge, Personal Attention

Our clients come to us to get a certain level of personal attention and genuine care. Our experts approach your challenges by building custom strategies and solutions that create value for your business. Whether helping drive business growth, mastering critical business needs, or addressing evolving marketplace demands, we support you with our wide range of comprehensive services.



TOGETHER, WE ARE LBMC

#1 IN
TENNESSEE

#3 IN
SOUTHEAST

#32
NATIONALLY

700+
TALENTED
PROFESSIONALS

400+
ADVISORY
PROFESSIONALS

100+
TAX
PROFESSIONALS

100+
AUDIT
PROFESSIONALS

60+
CYBER SECURITY/RISK
PROFESSIONALS

WHO WE SERVE:

- Ambulatory Surgery Centers
- Behavioral Health
- Continuing Care Retirement
- Durable Medical Equipment
- Health Plans
- Healthcare IT
- Healthcare Systems
- Home Health
- Hospice
- Hospitals
- Laboratories
- Life Sciences
- Not-For-Profits
- Pharmaceuticals
- Physician Practices
- Rehab & Physical Therapy
- Renal
- Rural Health Clinics
- Skilled Nursing Facilities
- Urgent Care

AWARD-WINNING SERVICE



Top Recommended
Accounting Firm



2022 Top 100 Firms



2022 Regional Leaders



NBJ's Fast 50
in 2022



2022 Best in
Business in Inc.



Top Recommended
Tax Firm



Top 35 Professional
Services Firm in the U.S.



Most Innovative Firm in
the U.S.



Fortune Certified Great
Place to Work



FOR DETAILED SERVICE OFFERINGS, BUSINESS CASE
STUDIES, EXPERT CONTENT & WEBINARS

VISIT LBMC.COM